

**19 MONUMENT ROCKS**  
GOVE COUNTY

View the breath-taking **Monument Rocks**, also known as the Chalk Pyramids. The natural formations are 18 miles north of Scott City, then turn east at **Keystone Gallery**, or 20 miles south of Oakley, then turn east on Jayhawk Rd. This site is the first National Natural Landmark in Kansas designated by the Department of Interior on October 31, 1968. These limestone formations stretch to 50 feet in height. **Monument Rocks** has also been chosen as one of the 8 Wonders of Kansas. The quiet beauty and scale of the **Monument Rocks** will be a lifetime memory.

Open during Daylight Hours



**15 LITTLE JERUSALEM**  
BADLANDS STATE PARK



These badlands are Kansas' most dramatic Niobrara chalk formation. They provide unique and important habitat for many plants and wildlife. Explore the trails to view the rock formations, some of which tower more than 100 feet above the nearby Smoky Hill River. **Little Jerusalem** is owned by The Nature Conservancy who partnered with the Kansas Department of Wildlife, Parks & Tourism to make portions of the area open to the public. Guided tours can be scheduled by calling 620-872-2061.

Open during Daylight Hours.



FOR BYWAY INFORMATION CONTACT:

<b>BUFFALO BILL CULTURAL CENTER</b> 785-671-1000 info@buffalobilloakley.org	<b>SCOTT CITY TOURISM</b> 620-872-5612 sctt@pld.com	<b>WALLACE COUNTY VISITORS BUREAU</b> 785-891-3564 museum@ftwallace.com
---	---	---



WesternVistasHistoricByway.com

Front Cover Photo by Alan Hutchins  
Back Photos by Bruce Hogle & Blaine Moats

*Western Vistas*  
**HISTORIC BYWAY**



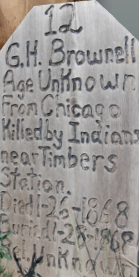
**24 EL QUARTELEJO MUSEUM**  
SCOTT CITY

Explore the **El Quartejejo Museum** as it leads the visitor through a developing story line, one which traces the history of this region of western Kansas through the stories told by the fossil discoveries on exhibit to present day Scott County information. The must see displays allow the visitor to take a glimpse of what life would have been like in the early Native American & Pioneer History. There are many exhibits that will stir your intellect and stimulate your imagination. From young children to their grandparents, there is something for everyone to enjoy.

Tues - Sat 1-5 p.m.  
Admission: FREE - donations welcome  
620-872-5912 • 902 W. Hwy 96  
www.elquartejejomuseum.org

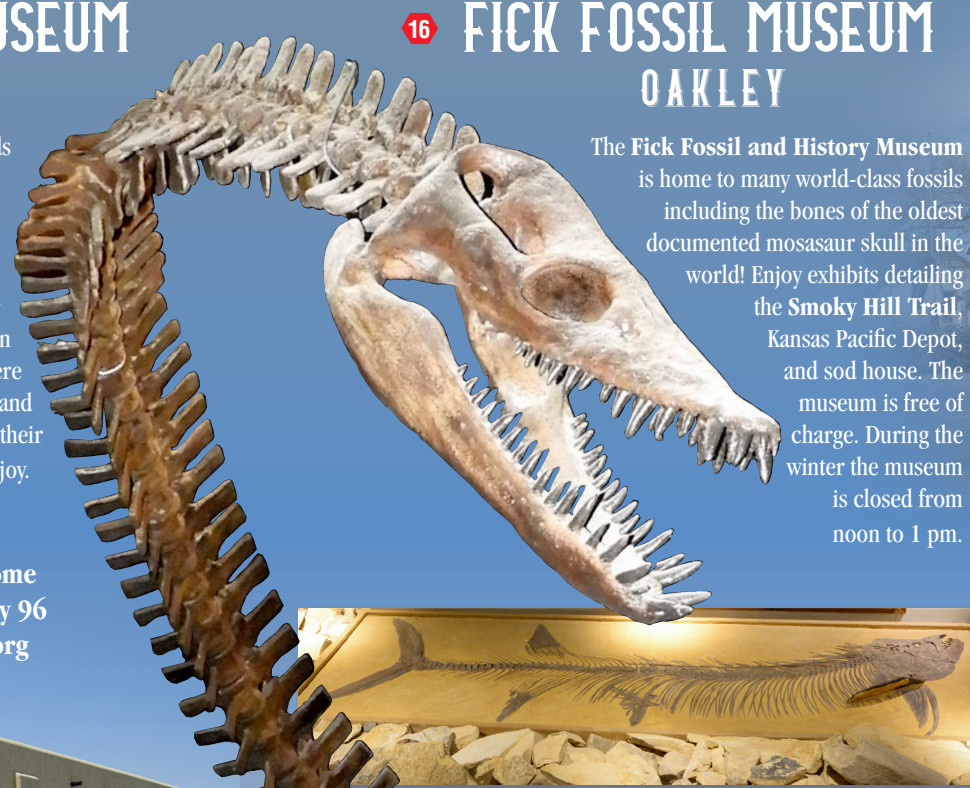


**7 FORT WALLACE CEMETERY**



**16 FICK FOSSIL MUSEUM**  
OAKLEY

The **Fick Fossil and History Museum** is home to many world-class fossils including the bones of the oldest documented mosasaur skull in the world! Enjoy exhibits detailing the **Smoky Hill Trail**, Kansas Pacific Depot, and sod house. The museum is free of charge. During the winter the museum is closed from noon to 1 pm.



Closed Holidays. Mon-Fri 9-5 Sat 9-3  
785-671-4839 • 700 W. 3rd St.  
www.visitoakleyks.com



**6 FORT WALLACE MUSEUM**  
WALLACE

**Fort Wallace** was established in 1865 to protect travel on the Smoky Hill Trail, as well as the construction of the Kansas Pacific Railway across Western Kansas. The area was a hotbed of conflict during the early Indian Wars, as the Cheyenne, Kiowa and Arapaho people struggled to defend their way of life on the Plains. Today, you can explore this history at the **Fort Wallace Museum** and its new Milford Becker Addition, where you can climb aboard a real stagecoach and gaze in wonder at a 40-foot swimming plesiosaur fossil discovered by the Fort surgeon in 1867.

Summer Hours (April-Oct): Mon-Sat 9-5 / Sun 1-5 Mountain Time Zone  
Call Ahead for Winter Hours or for special appointment.  
(785) 891-3564 • 2655 Highway 40  
www.ftwallace.com



**14 SMOKY VALLEY RANCH**  
LOGAN COUNTY

The Nature Conservancy's **Smoky Valley Ranch** preserves an almost vanished site: bison roaming the prairie. Five miles of hiking trails on this shortgrass prairie ranch feature dramatic chalk bluffs overlooking large expanses of grassland, rocky ravines and the **Smoky Hill River**.

Open during Daylight Hours  
[www.nature.org/kansas](http://www.nature.org/kansas)  
785-233-4400



**1 MOUNT SUNFLOWER**  
WALLACE COUNTY

Mount Sunflower, although not a true mountain, is the highest point in Kansas at 4,039 feet!

**BUTTERFIELD TRAIL MUSEUM**  
**9 RUSSELL SPRINGS**

In this beautiful 1887 renaissance-style building, Russell Springs preserves the rich history of the **Butterfield's Overland Despatch** (BOD) and succeeding stage lines, which operated along the Smoky Hill Trail from 1865-1869.

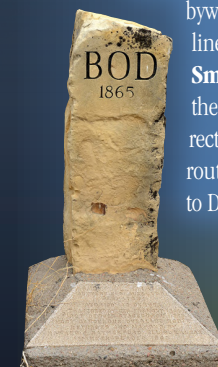
A prairie home complete with clothing, tools and furniture used by early plains settlers, as well as the old county jail house are also on the site. The Museum is open from the first Tuesday of May, through Labor Day weekend, annually.

Tues – Sat 9 to 12 & 1 to 5 Sun 1 to 5  
Free Admission.  
515 Hiltz • 785-751-4242  
[www.butterfieldtrailmuseum.org](http://www.butterfieldtrailmuseum.org)



**SMOKY HILL TRAIL & BUTTERFIELD'S OVERLAND DESPATCH**

The limestone **BOD** post along the byway mark the stage & freight line that followed historic **Smoky Hill Trail**. In 1865, the trail was the most direct, and most dangerous route from Atchison, KS to Denver, CO.



Mon-Fri 9-5 & Sat 11-5  
785-671-1000  
3083 US 83  
[www.buffalobilloakley.org](http://www.buffalobilloakley.org)



**24 JERRY THOMAS GALLERY & COLLECTION**  
SCOTT CITY

Where Art and History Tell a Story! Prepare yourself to be taken on a journey into the history, wildlife, and beauty of the old west by world renowned artist, Jerry Thomas.

Tues - Sat 1-5 p.m.  
Admission: Free, donations welcome  
620-872-5912 • 902 W. Hwy 96  
[www.jerrythomasartgallery.com](http://www.jerrythomasartgallery.com)



**17 BUFFALO BILL SCULPTURE & VISITOR CENTER**  
OAKLEY

Oakley celebrates the birthplace of the nickname "Buffalo Bill" Cody, earned in the legendary hunt with Bill Comstock. The twice life-sized bronze of Buffalo Bill on his horse in pursuit of a buffalo was created by Charlie & Pat Norton of Leoti, KS. Standing 16' tall and weighing 9,000 pounds, the bronze is one of the largest of its kinds and is one of the 8 Wonders of Kansas Art.

**21 DUFF'S BUFFALO RANCH**  
SCOTT COUNTY / LOGAN COUNTY

Take a ride on the wild side with a buffalo tour! Get up close and personal with one of the most magnificent animals ever created. Duff's Buffalo Ranch gives tours you won't soon forget on the back of a flatbed trailer in the midst of a great buffalo herd!

620-874-5120  
[www.duffmeats.com](http://www.duffmeats.com)



**20 KEYSTONE GALLERY**  
SCOTT CITY

Experience **Keystone Gallery** where you can view an extensive collection of local Kansas fossils including a 20' Mosasaur, 14' Xiphactinus and a 24' mural depicting the seaway that once covered the area. In this 1917 historic building you will find US & International fossils, rock and mineral specimens, and a cool gift shop with **Monument Rocks** souvenirs. The Gallery overlooks the Smoky Hill River valley, with a view of **Monument Rocks** and chalk outcroppings of the "Badlands of Kansas" region.

620-872-2762 • 401 US 83  
[www.keystonegallery.com](http://www.keystonegallery.com)



**22 HISTORIC LAKE SCOTT STATE PARK**  
SCOTT CITY

Visit **Lake Scott State Park!** This lake is a hidden oasis, full of rich history and beautiful scenery. One can enjoy boating, swimming, camping, hiking, hunting, and fishing. Visitors can also reserve one of two cabins. The park includes two historical sites. The **Steele Home Museum** was the home of Herbert & Eliza Steele and has been preserved much as it was 100 years ago. **El Cuartelejo Pueblo Ruins** are the 1664 reconstructed pueblo ruins of the Taos Indians, who were fleeing Spanish rule and later used by Picurie Indians in 1701. The ruins were discovered by Herbert Steele in the mid 1890's. In 1970, the Kansas Historical Society began extensive excavation & restoration and the present site allows visitors to see the pueblo's reconstructed foundation.

620-872-2061  
[www.ksoutdoors.com](http://www.ksoutdoors.com)

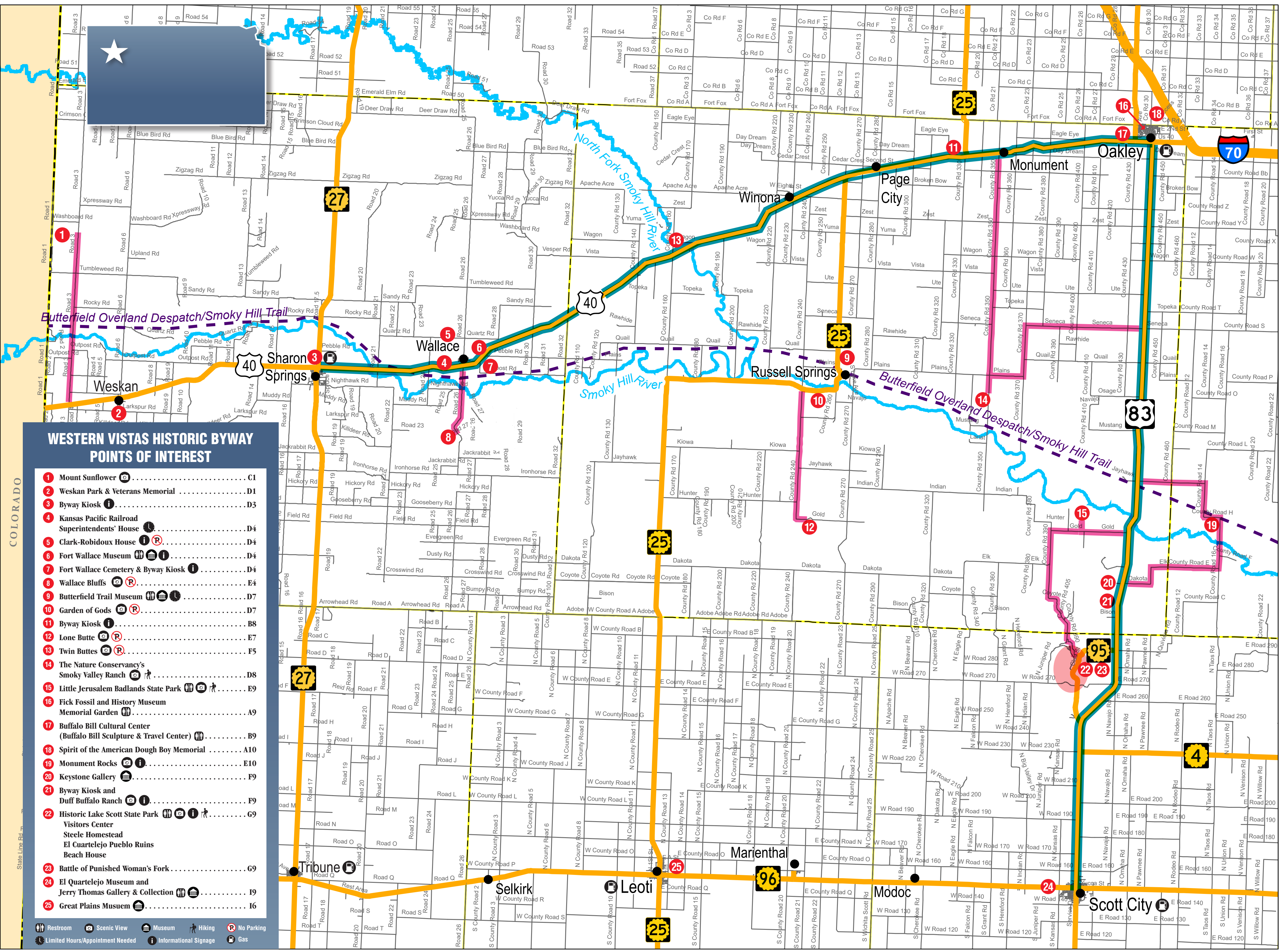


**23 BATTLE OF PUNISHED WOMAN'S FORK**  
SCOTT COUNTY

Travel to the place where the last Indian battle in Kansas was fought on September 27, 1878. **Punished Woman's Fork** is about one mile south of **Lake Scott State Park**. A monument overlooks the cave, canyon, and the bluffs where the Northern Cheyenne hid waiting to ambush the U.S. Cavalry. To this day, this historical site gives evidence of the fierce battle that took place, with the rifle pits the Cheyenne strategically positioned still visible on the hilltops. Contact the **El Cuartelejo Museum** for more information.

Open during Daylight Hours





**WESTERN VISTAS HISTORIC BYWAY  
POINTS OF INTEREST**

- 1 Mount Sunflower C1
- 2 Weskan Park & Veterans Memorial D1
- 3 Byway Kiosk D3
- 4 Kansas Pacific Railroad Superintendents' House D4
- 5 Clark-Robidoux House D4
- 6 Fort Wallace Museum D4
- 7 Fort Wallace Cemetery & Byway Kiosk D4
- 8 Wallace Bluffs E4
- 9 Butterfield Trail Museum D7
- 10 Garden of Gods D7
- 11 Byway Kiosk B8
- 12 Lone Butte E7
- 13 Twin Buttes F5
- 14 The Nature Conservancy's Smoky Valley Ranch D8
- 15 Little Jerusalem Badlands State Park E9
- 16 Fick Fossil and History Museum Memorial Garden A9
- 17 Buffalo Bill Cultural Center (Buffalo Bill Sculpture & Travel Center) B9
- 18 Spirit of the American Dough Boy Memorial A10
- 19 Monument Rocks E10
- 20 Keystone Gallery F9
- 21 Byway Kiosk and Duff Buffalo Ranch F9
- 22 Historic Lake Scott State Park Visitors Center Steele Homestead El Cuartelejo Pueblo Ruins Beach House G9
- 23 Battle of Punished Woman's Fork G9
- 24 El Cuartelejo Museum and Jerry Thomas Gallery & Collection I9
- 25 Great Plains Museum I6

Restroom  
 Scenic View  
 Museum  
 Hiking  
 No Parking  
 Limited Hours/Appointment Needed  
 Informational Signage  
 Gas